

Chassis runners

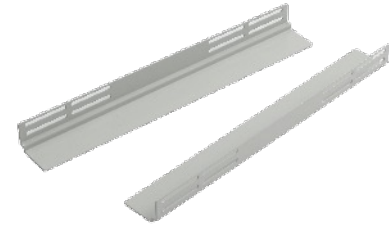
Sold in pairs - chassis runners fit between the front and back mounting angles and are a simple and cost effective alternative to cantilever or fixed shelving.

Compatible with

USpace 4210, 7210, 7250, UCoustic and ColdLogik cabinet ranges

Weight loading

80kg evenly distributed



Pair chassis runners

Technical data

Chassis runners

Part number	Description	Product Weight	Suit cabinet depth
RA0-0456-AA	400d	1.0kg	600
RA0-0457-AA	600d	1.5kg	800
RA0-0460-AA	700d	1.7kg	1000
RA0-0458-AA	900d	2.2kg	1200

Fixings

4 x M6x16 bolts

4 x M6 nuts

Materials and finish

1.5mm CR4 steel

Textured powder coat light grey RAL 7035

(Other colour options are available on request)

Dimensions

